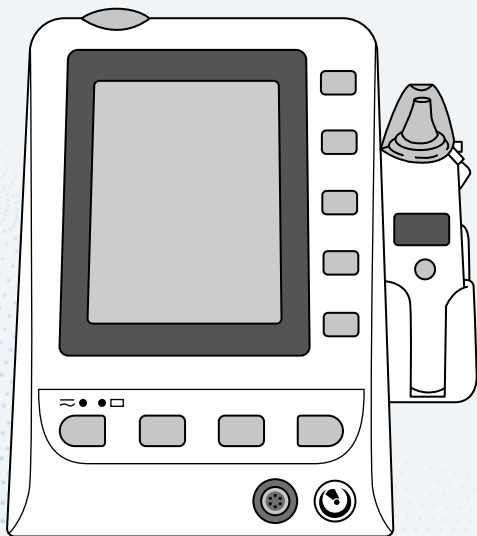


QUICK START GUIDE

M3 Vital Signs Monitor





M3 Vital Signs Monitor

Contact Us:

info@mdprousa.com
888-602-7767

Contents

02

Basic Setup

- 02 Powering on the M3
- 03 Before taking an SpO2 Measurement
- 04 Before taking an NIBP Measurement

06

Configurations

- 06 Tympanic Temperature Module Setup
- 06 Taking a Temperature Reading (Tympanic Temp)
- 07 Oral Temperature Module Setup
- 07 Taking a Temperature Reading (Oral Temp)

08

FAQ

- 08 How to Set Up Automatic Blood Pressure Readings
- 08 How to Set up Trigger Printing
- 08 How to Fix “Loose Cuff Error”
- 09 How to Change the Recording Interval
- 09 How to Connect/Turn on Recorder

Basic Setup

Powering on the M3

1. Place the M3 on its back (screen side up) to reveal the underside of the machine.
2. Lift and remove the bottom of the battery compartment cover. **(Figure A)**
3. Place battery in the compartment. Ensure the barcode information is facing right before inserting. **(Figure B)**
4. Replace the battery compartment cover, and revert the machine back to the upright position.

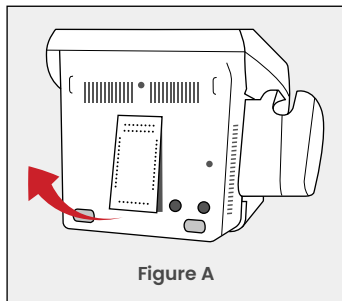


Figure A

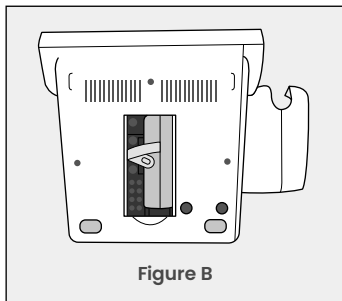


Figure B

5. Plug one end of the AC Power Cable into the power supply socket, located towards the bottom left back side of the unit.
Plug the other end into an AC Wall Outlet. **(Figure C)**

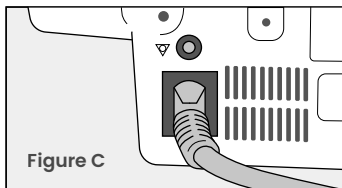
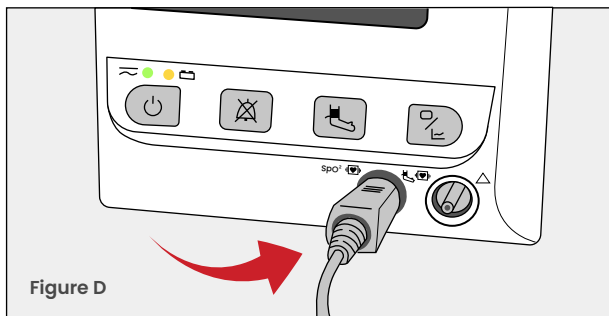


Figure C

6. Ensure both lights above the power button are on.
Press the power button on the front of the unit (bottom left) to turn on the unit. Wait until the parameters are present on the screen.
 - **GREEN Light:** The unit is being powered via the AC power cable.
 - **YELLOW/ORANGE Light:** The battery is inserted and charging.
 7. The M3 comes patient ready! The unit is now ready to use.
-

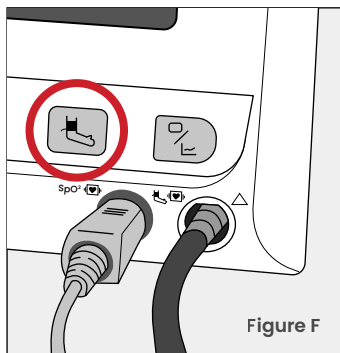
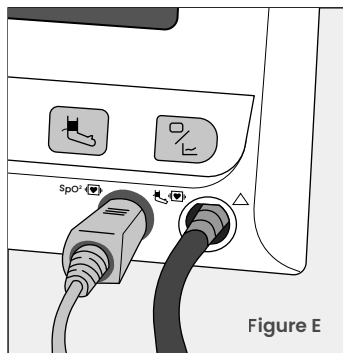
Before Taking an SpO2 Measurement

1. Connect the SpO2 Sensor Cable to the SpO2 Connector Port, labeled 'SpO2', located towards the bottom right of the unit.
(Figure D)
2. Clip the SpO2 Sensor to the patient's index or middle finger.
3. Once attached, the sensor will start measuring SpO2 automatically.



Before Taking an NIBP Measurement

1. Connect the NIBP Tube to the NIBP Cuff Connector Port, located towards the bottom right of the unit. **(Figure E)**
2. Place the cuff on the patient's arm, about one inch above the bend of the elbow. Ensure that the patient cuff matches the patient type on the M3.
3. When you are ready to take a measurement, press the "NIBP Start/Stop Button", which will inflate the cuff and start measuring. **(Figure F)**
4. Once the blood pressure has been taken, NIBP will stop measuring and the cuff will deflate.



BASIC SETUP COMPLETE

*Continue to Next Pages for Oral
& Tympanic Configuration Setup*

Configurations

Tympanic Temperature Module Setup

1. Plug one end of the Ear Thermometer Communication Cable into the bottom of the Infrared Ear Temperature Module (Thermometer). Plug the other end into the TEMP port, located on the back of the TEMP Module holder.
 2. Unlatch the Probe Shield to reveal the probe.
 3. Align the center of the probe to the center of the probe cover. Insert the probe into the probe cover, located on the probe cover loader, until the probe cover clicks in place. Make sure the adhesive side of the probe cover is placed upward.
-

Taking a Temperature Reading

1. Press On/MEM button on the thermometer. An “ear” icon will display on the LCD of the thermometer, which will be followed by 2 beeps.
2. Carefully tug the patient's ear to create space for the probe to comfortably insert into the ear canal. Aim towards the eardrum to obtain an accurate reading.
3. Press the blue “Scan” button, located on the back of the thermometer, for one full second. Once you hear a long beep, the measurement is complete and will be shown on the monitor.

Oral Temperature Module Setup

1. Plug the Oral/Axillary Probe into the TEMP port, located on the back of the Oral/Axillary Probe holder.
 2. Remove the Oral/Axillary Probe from the Oral/Axillary holder to allow the probe to warm up. Once the probe beeps, a “Warm-Up Over” notification will appear on the screen.
 3. Place a probe cover over the sensor. The button near the handle will pop up when the probe cover is fully inserted and secure.
 4. To release the probe cover, press the button above the handle.
-

Taking a Temperature Reading

1. To measure temperature, place the sensor tip under the patient's tongue on either side of the mouth to reach the rear sublingual pocket.
2. When positioned correctly, have the patient close their lips around the sensor to start measuring temperature.

FAQ

How to Set Up Automatic Blood Pressure Readings

1. Go to:
 - > "System Menu"
 - > Select "NIBP Set Up"
 - > Turn "Inflation Mode" to "Auto"
 - > Select the interval of your choice
-

How to Set up Trigger Printing

1. Go to:
 - > "System Menu"
 - > Select "Maintain"
 - > Enter User Password "9981"
 2. In the User Maintain Menu:
 - > Go to "Other Set Up"
 - > Select "NIBP Set Up"
 - > Turn Trigger to "ON"
-

How to Fix "Loose Cuff Error"

1. Check the age parameters on the display banner at the top of the screen.
 - **ADU:** Adult
 - **PED:** Pediatric
 - **NEO:** Neonate
2. Check that the cuff size attached matches your patient type
 - i.e set to "ADU" for Adult Cuff, "PED" for Child Cuff, etc.
3. If they do not match, use the "Hot Key" in the top right-hand corner (with the adult and baby icons) to toggle through the different patient types and adjust accordingly.

How to Change the Recording Interval

1. Go to:
 - > "NIBP"
 - > Select "NIBP Set Up"
 - > Configure time intervals to the parameters that you need
 2. Adjust Trigger:
 - > "User Configuration Settings"
 - > Select "NIBP Set Up"
 - > Turn on "Trigger"
-

How to Connect/Turn on Recorder to Set up Trigger Printing

1. Check that the printer module is "ON"
 2. Go To:
 - > "Menu"
 - > Select "Maintain"
 - > Go to Factory Key, and input "9980"
 - > Select "Recorder", and toggle from "OFF" to Vector"
 3. Once the printer module is on, use the "Hot Key" in the top right-hand corner (with the adult and baby icons) to start recording.
-



*Scan here for additional assistance
setting up your product*



4204 Jutland Drive
Suite A, San Diego
CA, 92117

info@mdprousa.com
888-602-7767