

Transducers

U60

Diagnostic Ultrasound System

Clear. Compact. Comprehensive



| | | | |
|---|--|--|--|
| <p>C5-2b</p>  <p>2-6MHz Curved Array</p> | <p>C352UB</p>  <p>2-6MHz Curved Array</p> | <p>E612UB</p>  <p>5.8MHz Endocavity</p> | <p>P5-1b</p>  <p>2-4MHz Phased Array</p> |
| <p>L15-7b</p>  <p>7-16MHz Linear Array</p> | <p>L1042UB</p>  <p>8-12MHz Linear Array</p> | <p>L742UB</p>  <p>5-10MHz Linear Array</p> | <p>L552UB</p>  <p>4-8MHz Linear Array</p> |
| <p>C422UB</p>  <p>3-6MHz Micro-Convex</p> | <p>C6152UB</p>  <p>4-9MHz Micro-Convex</p> | <p>C612UB</p>  <p>5.10MHz Micro-Convex</p> | |

About Edan USA

Edan USA is a healthcare company dedicated to improving the human condition around the world by delivering value-driven, innovative and high-quality medical products and services. For over 20 years, Edan USA has been pioneering a comprehensive line of medical solutions that address a broad range of healthcare practices including:

- Diagnostic ECG
- Ultrasound imaging
- In-Vitro Diagnostics
- Patient Monitoring
- Point-of-Care Testing
- Veterinary
- OB/GYN

Healthcare professionals around the world depend on Edan USA's breakthrough medical technologies and outstanding customer support.

U60

Diagnostic Ultrasound System

With its compact design, user-friendly operation and advanced imaging technologies, the U60 diagnostic ultrasound system offers a broad range of clinical applications to address all of your imaging needs.



Compact Design

- Compact, lightweight design facilitates mobility
- Integrated battery enables operation anywhere
- Large 15" monitor for easy viewing

Comprehensive Clinical Applications

- Full set of transducers to support all applications

Advanced Imaging Technologies

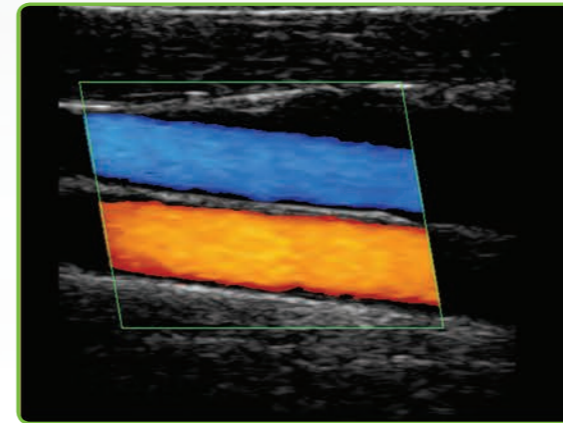
- Tissue Harmonic Imaging
- Spatial Compounding Imaging
- Speckle Reduction Imaging

User-Friendly Operation

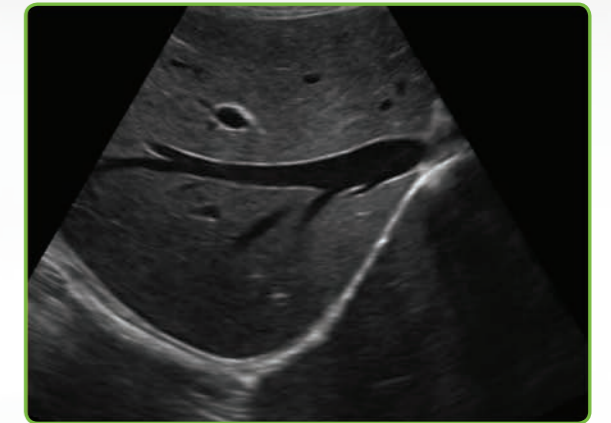
- Backlit, easy-to-use control panel
- Customizable user defined controls
- Large capacity data storage

Excellent Image Quality

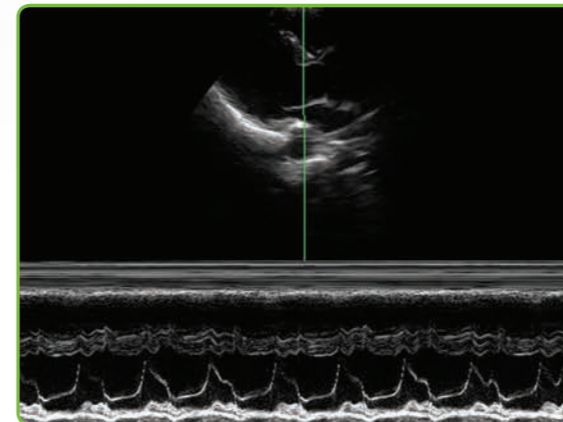
The U60 provides excellent detail, contrast resolution and image uniformity without sacrificing penetration. Excellent color and Doppler sensitivity easily detects small, low flow vessels.



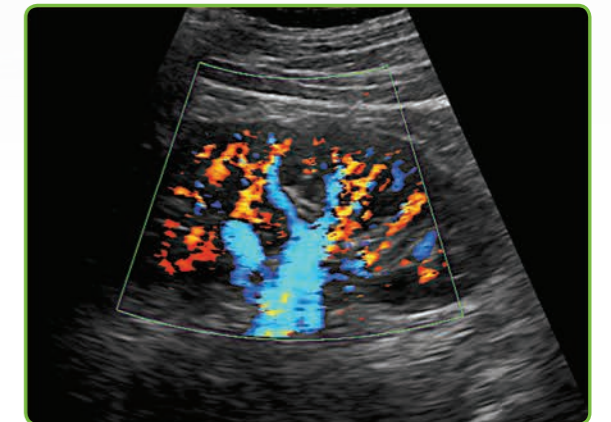
Common Carotid Artery



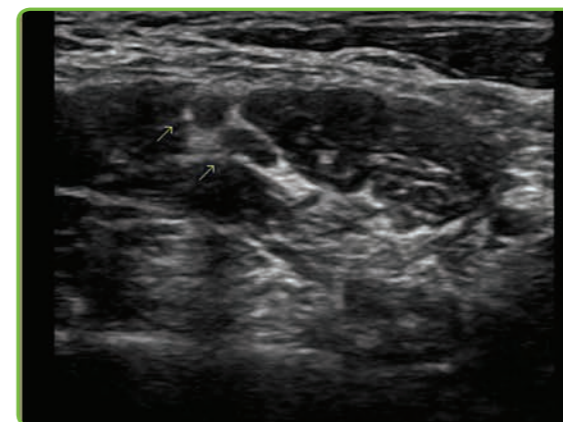
Right Hepatic Vein



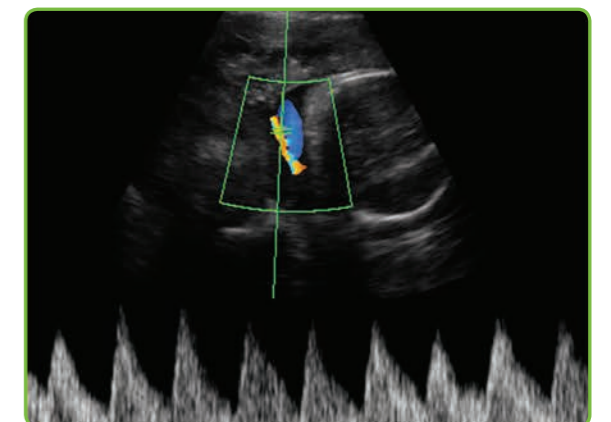
Mitral Valve



Renal Vasculature



Interscalene



Umbilical Artery